

RESOLUTION NO. ~~04~~ 49

RESOLUTION CREATING RURAL SPECIAL IMPROVEMENT MAINTENANCE
DISTRICT TO BE KNOWN AS R.S.I.D. #720M
LONE EAGLE SUBDIVISION, 2ND FILING

WHEREAS, the Board of County Commissioners of Yellowstone County, Montana, met in regular session and executed a Resolution of Intent to Create a Rural Special Improvement Maintenance District #720M for Lone Eagle Subdivision, 2nd Filing, as described in Exhibit A and more particularly shown in Exhibit B (map) and,

WHEREAS, the Clerk and Recorder published the Notice of the passage of Resolution of Intent to Create the District in the Billings Gazette on May 21st, 2004 and May 28th, 2004, and mailed a copy of the Notice to every person, firm or corporation owning property in the District; and,

WHEREAS, the Board of County Commissioners finds, determines and declares that:

1. That the public interest or convenience requires the creation of a Rural Special Improvement Maintenance District as hereinafter described;
2. That the costs of providing maintenance shall be borne by owners of the property included within the boundaries of the Rural Special Improvement Maintenance District with all existing and future lots being assessed an equal amount on a per lot basis;
3. That the purpose of forming the District is to provide the maintenance, preservation, and repair of the streets located within the boundaries of this District;
4. That the Commissioners have been presented with a valid Petition to create the proposed District;

NOW, THEREFORE, BE IT RESOLVED by the Board of County Commissioners of Yellowstone County as follows:

1. The Commissioners have acquired jurisdiction to create a Rural Special Maintenance District No. 720M to provide for the annual maintenance, grading, operation and preservation of the streets. The maintenance costs are more particularly described in Exhibit C. The estimated costs shown do not preclude other eligible street maintenance expenditures.
2. All of the costs of the District shall be assessed equally on a per lot basis for all existing and future lots. (See Exhibit D.) The boundaries of this District are shown on the map attached as Exhibit B and described in Exhibit A.
3. The number of the Rural Special Maintenance District thereof shall be **No. 720M**.

Page 2
Resolution Creating
R.S.I.D.# 720M

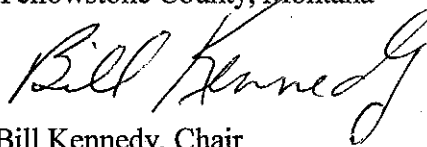
4. All lots accessing their property from the streets will benefit from proposed R.S.I.D. and shall be assessed for road maintenance. All lots will be assessed an equal amount based upon the total cost of the maintenance.

5. The Commissioners desire that an Ad Hoc Committee be appointed to make recommendations to the Commissioners with regard to the need for assessments to be made for the maintenance and the amount of the assessments, and how the assessments should be spent. The Commissioners ask that the Petitioners submit a list of some individuals who are willing to serve on the Ad Hoc Committee.

PASSED AND ADOPTED by the Board of County Commissioners of Yellowstone County, Montana, this 22th day of June, 2004.

Board of County Commissioners
Yellowstone County, Montana

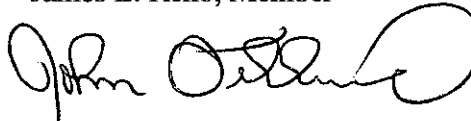
(SEAL)



Bill Kennedy, Chair

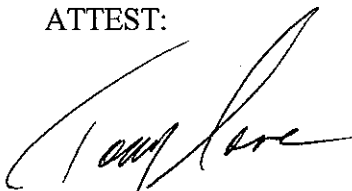
Absent

James E. Reno, Member



John Ostlund, Member

ATTEST:



Tony Nave
Clerk and Recorder

PETITION TO ESTABLISH A RURAL SPECIAL IMPROVEMENT DISTRICT (RSID)

**SECTION B
LEGAL DESCRIPTIONS & OWNERSHIP REPORTS (ATTACHED)**

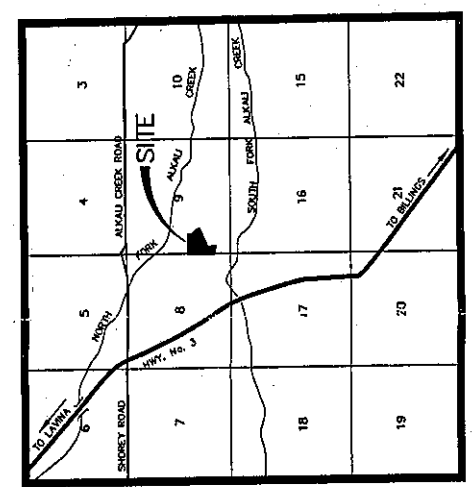
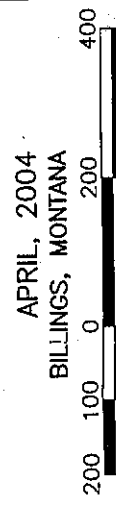
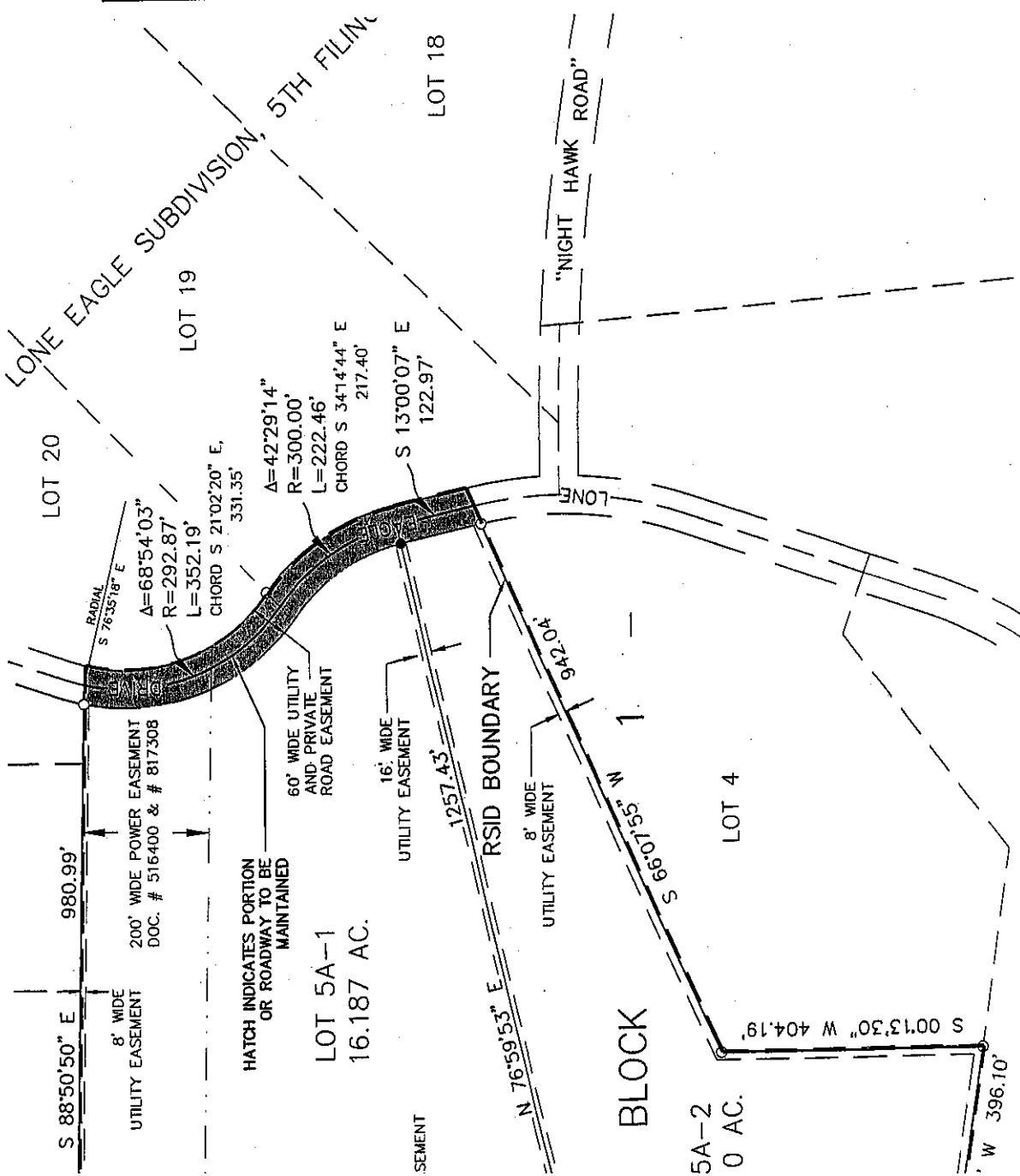
THAT PORTION OF THE SW ¼ OF SECTION 9, T. 1 N., R. 25 E., P.M.M.,
YELLOWSTONE COUNTY, MONTANA, KNOWN AS LOTS 5A-1 AND 5A-2 IN BLOCK 1
OF SECOND AMENDED LOT 5, BLOCK 1, LONE EAGLE SUBDIVISION, 2ND FILING.

hibit B

**SECOND AMENDED LOT 5, BLOCK 1,
LONE EAGLE SUBDIVISION, 2ND FILING**

SITUATED IN THE SW 1/4 OF SECTION 9, T. 1 N., R. 25 E., P.M.M.
YELLOWSTONE COUNTY, MONTANA

JACK RAMIREZ & JIM HERTZ
ENGINEERING, INC.
SCALE: 1" = 200'



ENGINEERING, INC.
Consulting Engineers and Land Surveyors
1200 South 22nd Street West
Billings, Montana 59102
Phone (406) 656-5255
www.rhgc.com



SECOND AMENDED LOT 5, BLOCK 1,
LONE EAGLE SUBDIVISION, 2ND FILING
SITUATED IN THE SW 1/4 OF SECTION 9, T. 1 N., R. 25 E., P.M.M.
YELLOWSTONE COUNTY, MONTANA
RSID BOUNDARY

CALL FOR
REVISIONS
3/25/04

APPROVED BY:
QUALITY ASSURANCE

SCALE: 1" = 200'

FILE: LOTS_6500.DWG
PROJECT NO.: B317.12
SHEET 1 OF 1

Exhibit C

PETITION TO ESTABLISH A RURAL SPECIAL IMPROVEMENT DISTRICT (RSID)

**SECTION C
ESTIMATED ANNUAL MAINTENANCE COST**

FALL MAINTENANCE:

ACTIVITY/IMPROVEMENT	ESTIMATED COST
SNOW PLOWING	\$75

WINTER MAINTENANCE:

ACTIVITY/IMPROVEMENT	ESTIMATED COST
SNOW PLOWING	\$150

SPRING MAINTENANCE:

ACTIVITY/IMPROVEMENT	ESTIMATED COST
CRACK SEALING	\$125
WEED CONTROL	\$75

SUMMER MAINTENANCE:

ACTIVITY/IMPROVEMENT	ESTIMATED COST
WEED CONTROL	\$75

TOTAL ESTIMATED ANNUAL MAINTENANCE COST: \$500

